

Willow Creek Wastewater Planning

Preliminary Design Grant

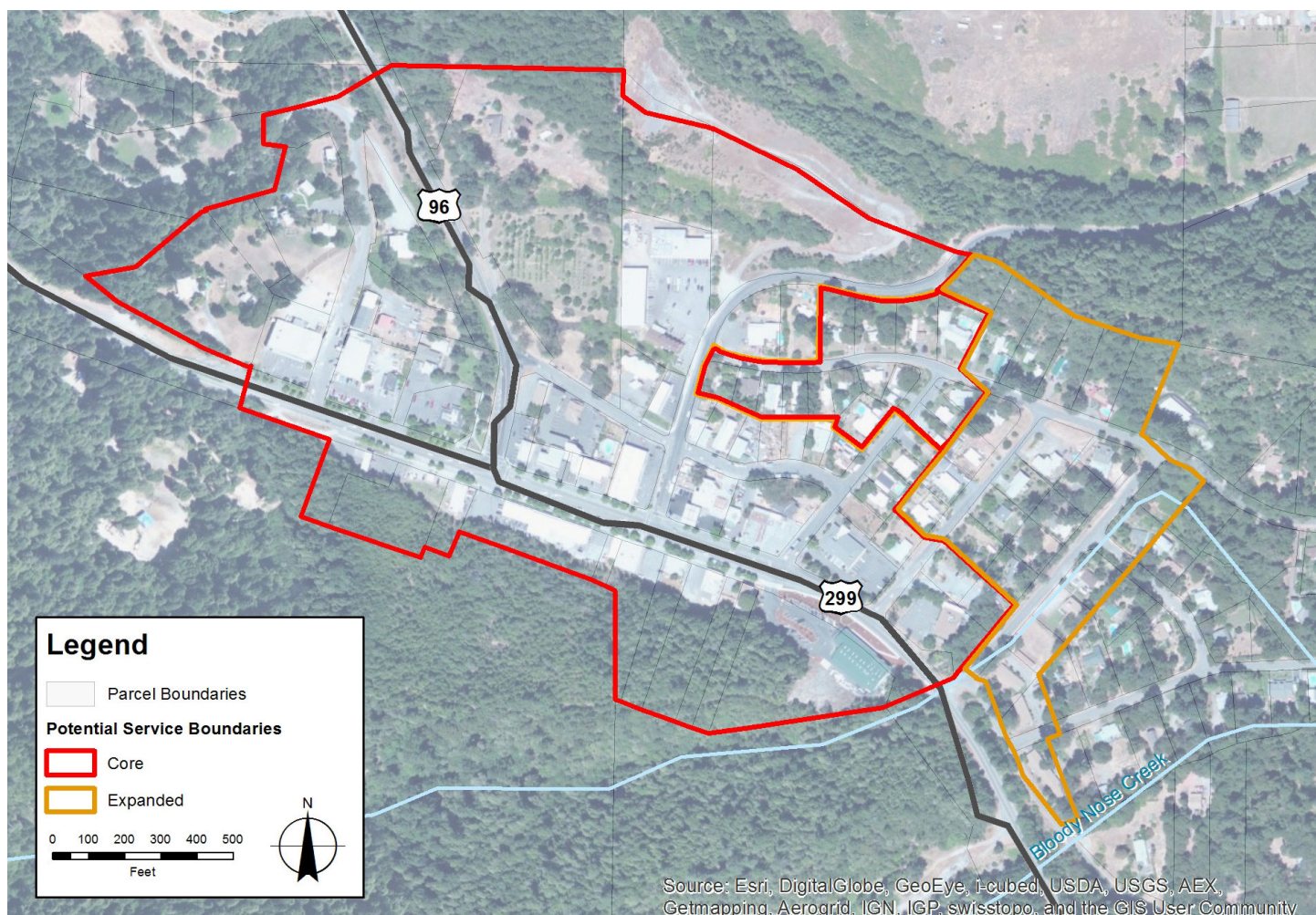
The Willow Creek Community Services District (WCCSD) has received a Planning / Preliminary Design Grant for a community wastewater (sewer) system for the downtown area of Willow Creek. This grant will allow the community of Willow Creek to determine if a wastewater system is a possibility for the downtown area and help determine more detailed estimated costs.

At the completion of the grant, Willow Creek CSD must apply for design/ construction grants and loans. The amount of grant funds received and loan terms will be critical to determining if the WCCSD will proceed forward with a community wastewater system.

- This is a 100% grant.
- The grant is for preliminary design only. Final design will not occur until a design/construction grant is acquired.
- The costs to users will greatly depend on the level of construction grants and loan types the WCCSD receives.
- The users of the system will be the only WCCSD members with a sewer fee. WCCSD members outside of the service boundary will not be charged.

Potential Service Boundaries

The potential service boundaries for the community wastewater system are shown below. The core boundary is the primary area which is being considered for a sewer system. The expanded boundary includes nearby residential parcels which could be included in the wastewater system. The addition of these users would add minimal construction costs and would reduce the per user cost for all users.



Willow Creek Wastewater Planning

System Size

Estimate design flows for the Willow Creek Downtown wastewater system are around 30,000 gallons per day or about 150 EDU's. An EDU, or equivalent dwelling unit, is a unit which takes into account the difference between residential and commercial users of a sewer system.

In comparison, nearby local community wastewater systems have approximately the following EDU's:

- McKinleyville 6362 EDU's
- Blue Lake 1026 EDU's
- Smith River Rancheria 250 EDU's
- Weott 200 EDU's

This comparison shows that the planned wastewater system for Willow Creek will be much smaller than most systems in our neighbouring communities.

Systems Components

The new community wastewater system will include the following elements.

- Collection: New pipes will be installed to collect wastewater from each property within the service boundary and pipe it to the treatment facility. Pumps may be required to serve low lying connections and to reach the treatment site.
- Treatment facility: Alternative types of treatment processes will be evaluated, based on multiple criteria, including treatment level achieved, land requirements, capital, operational and maintenance costs.
- Disposal: It is anticipated that the disposal of effluent water will be subsurface. This is similar to the leach field in a residential septic system. We will also evaluate the potential for reuse of the effluent.

Grant Documents

As part of this grant, the following documents will be prepared:

- Preliminary Engineering Report: This report will describe the anticipated design flows, collection and treatment system types, construction, operation & maintenance costs, as well as an updated rate analysis.
- Environmental Impact Report (EIR): This report will be complete as required under the California Environmental Quality Act (CEQA).
- Report of Waste Discharge and Permit: This report will entail the necessary elements to apply for a permit with the Regional Water Quality Control Board to discharge treated effluent water to the selected disposal site.
- Assistance with obtaining grant funding. GHD will assist the WCCSD in securing loans and grants to fund the design and construction.

Community Involvement

Community involvement is a key element in this project. This system is for you and your input is encouraged.

- Three community meetings are planned. The first one will be held at the beginning of the EIR (second quarter 2014), the second when the draft EIR is completed (first quarter 2015), and the third when the final EIR is finished (third quarter 2015).
- Monthly wastewater committee meetings are held at the WCCSD office on the fourth Wednesday of each month from 3-5 pm. All community members are welcome to attend.
- A status update regarding this project is given at each WCCSD monthly meeting, generally held on the fourth Thursday of each month at 8 am.



Lonnie Danel
Manager, WCCSD
Willow Creek, CA
(530) 629-2136



Pat Kaspari
GHD
Eureka, CA
(707) 483-8326



Josh McKnight
Trinity Valley
Consulting Engineers
Willow Creek, CA
(530) 629-3000