

Willow Creek C.S.D.

135 Willow Rd.
Willow Creek, Ca 95573-0008
Phone: 530-629-2136
Fax: 530-629-2137
willowcreekcsd@gmail.com



June 2024

**Bulk Rate
U.S. Postage Paid
Willow Creek Chamber
Permit No. 31**

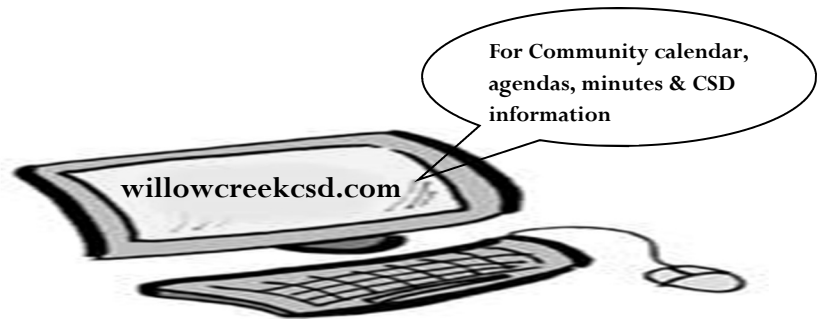
Return service requested

District Staff

Susan O’Gorman, General Manager
Lynn White, Office Manager
Wyatt Opie McBroom, Water Operator
Steven Braun, Water Trainee
Ken Gallamore, Recreation Technician

WCCSD Board of Directors

Board Chair: Riley Morrison
Vice Chair: Shannon Hughes
Director: C. Caroline Snow
Director: Jaime Stanfield
Director: Ed Duggan



WCCSD Calendar

WCCSD Regular Board Meetings, 6 p.m.

at the District Office, 135 Willow Rd. (& by Zoom)
(4th Thursday each month, except Nov. and Dec.
when it is the 3rd Thursday)

July 25, Aug. 22, Sept. 26, Oct. 24, Nov. 21, Dec. 19
2025: Jan. 23, Feb. 27, Mar. 27, April 24, May 22,
and June 26

Holidays (Office will be closed)

July 4th & Labor Day - Sep. 2nd, 2024
Veteran’s Day - Nov. 11th (observed)
Thanksgiving Day & day after
December 25th & January 1st
Martin Luther King Jr. - Jan. 20th, 2025
President’s Day - Feb. 17th, 2025
Memorial Day - May 26th, 2025



~New Fire Hydrant on Maytan Street~

District meetings also on ZOOM
Use ZOOM Meeting ID: 414 162 5718
<https://zoom.us/j/4141625718>
or DIAL IN: 1-669-900-6833
press *9 to raise your hand to speak
and *6 to mute/unmute



Willow Creek Community Services District
2023 Water Quality Consumer Confidence Report
Public Water System Number 12-10015
June 2024

For additional information concerning your drinking water, contact Susan O’Gorman, General Manager and Chief Operator, at 530-629-2136 or email willowcreekcsd@gmail.com. If you would like a tour of our facility, please contact Susan O’Gorman at 530-629-2136. Our operators would be more than happy to guide you through our treatment process.

The Willow Creek Community Services District (District or WCCSD) owns and operates a public water system that serves domestic water to approximately 945 service connections, with a population of 1,710 people.

The source of supply for your water is from Willow Creek, a tributary of the Trinity River. Your source water is drawn through naturally filtered sand and gravels in the creek streambed. The District also collects surface water during summer demand from a surface water collection system with a special protective intake.

Our water treatment facility was installed in the spring of 2007. This facility is a modern, inline, direct filtration plant. This facility consists of a control center with the latest in technology with controls and monitoring equipment. The three, multi-stage, pressure filters have 720 square feet of surface filter media that produce the highest quality of water. To assist in the filtration process, a synthetic organic polymer is added to the water, prior to the filters, which causes the very small particles to clump together and filter out.

With the installation of our water treatment facility, the District meets the Surface Water Treatment Rule. All public systems under the direct influence of surface water shall have a filtration system that will remove *Cryptosporidium* 99% of the time, *Giardia lamblia* cysts 99.9% of the time and Viruses 99.99% of the time. The key item in this process is the addition of sodium hypochlorite (chlorine) to the water. We are required by the State to maintain a chlorine residual in the water distribution system at all times.

The facility can produce up to three million gallons of water a day at peak production if needed. Normal production in the summer averages 1.2 million gallons per day and in the winter the average is 325,000 gallons of water per day.

The District monitors disinfection and turbidity 24 hours per day. The treatment facility has alarms that will shut down the treatment facility in case of equipment and treatment failures. This alarm system is to protect our customers from potential pathogens that, if not treated properly, may cause humans to become ill.

Testing for bacteriological contaminants in the distribution system is required by State Regulations. Testing is done regularly to verify that the water system is free from coliform bacteria. The minimum number of tests required for our District is three per month. In our distribution system, we generally test once per week. We also take a sample once per month for source water bacteria. The District has met coliform standards within our distribution system.

2023 Annual Water Usage (million gallons) - 230.1 million gallons total

Jan.	Feb.	Mar.	Apr.	May	June	July	Aug.	Sep.	Oct.	Nov.	Dec.
10.0	11.2	14.0	13.8	20.1	29.2	36.7	35.2	22.9	15.1	11.0	10.8



Este informe contiene información muy importante sobre su agua para beber.
Favor de comunicarse Willow Creek Community Services District
a 135 Willow Road, Willow Creek, 530-629-2136 para asistirlo en español.

Lead & Copper

If present, elevated levels of lead can cause serious health problems, especially for pregnant women and young children. Lead in drinking water is primarily from materials and components associated with service lines and home plumbing. The Willow Creek CSD is responsible for providing high quality drinking water, but cannot control the variety of materials used in plumbing components. When your water has been sitting for several hours, you can minimize the potential for lead exposure by flushing your tap for 30 seconds to 2 minutes before using water for drinking or cooking.

Lead and copper testing of water from individual taps in the distribution system is required by State regulations. Our water system is required to sample every 3 years. The table below summarizes the most recent sampling for lead and copper.

Test	Year tested	Number of Samples	Samples Required	90 th PPB	Action Level
Lead	2023	10	10	2.9	15
Copper	2023	10	10	680	1300

Chemical sample results showing detected contaminants

The following tables list all detected chemicals in our water during the most recent sampling. Please note that not all sampling is required annually so in some cases our results are more than a year old. These values are expressed in PPM or PPB unless otherwise stated.

Contaminants with Primary MCLs

Chemical Detected	Source of Sample	Year Tested	Level	MCL	Source of Chemical
Trihalomethanes (TTHM's)	Distribution	2023	14	80 PPB	Organic / Chlorine
Haloacetic Acids (HAA5)	Distribution	2023	22	60 PPB	Organic / Chlorine
Nickel	Well Pump 4	2024	10	100 PPB	Natural Deposits
Gross Alpha	Well Pump 4	2024	0.243	pCi/L	Natural Deposits
Radium 228	Well Pump 4	2024	0	pCi/L	Natural Deposits
Barium	Well Pump 4	2024	18	1000 PPB	Discharge of drilling / Natural Deposits
Chromium	Well Pump 4	2024	2.46	10 PPB	Natural Deposits / Chemical Plants

Contaminants with secondary MCLs

Chemical Detected	Source of Sample	Year Tested	Level	MCL	Source of Chemical
Aluminum	Composite	2012	53	1000 PPB	Natural Deposits
Arsenic	Well Pumps 2 & 4	2012	2.5	7 MFL	Natural Deposits
Asbestos	Composite	2017	0.5	10 PPB	Natural Deposits
Chloride	Well Pump 4	2024	2.91	250 PPM	Natural Deposits
Foaming Agent (MBAS)	Composite	2018	0.05	0.5 PPM	Municipal and industrial waste discharges
Total Dissolved Solids (TDS)	Well Pump 4	2024	120	500 PPM	Natural Deposits
Specific Conductance	Composite	2018	160	1600 µS/cm	Substances that form ions when in water; seawater influence
Sulfate	Well Pump 4	2024	9.0	250 PPM	Natural Deposits
Iron	Well Pumps 2 & 4	2012	0.035	0.3 PPM	Natural Deposits

Drinking Water Source Assessment & Watershed Study

Our most recent water source assessment was completed by the State Water Resource Control Board, Division of Drinking Water, in August 2002.

Our most recent watershed study was completed by Trinity Valley Consulting Engineers, Inc. May 2014

If you would like to view the complete assessment of our drinking water source, our address is 135 Willow Road in Willow Creek, CA or you may call our office at 530-629-2136 and ask for Susan O'Gorman, General Manager.

Definitions of some of the terms used in this report:

Public Health Goal (PHG): The level of contaminant in drinking water below which there is no known or expected risk to health. PHGs are set by the California Environmental Protection Agency.

Maximum Contaminant Level Goal (MCLG): The level of a contaminant in drinking water below which there is no known or expected risk to health. MCLGs are set by Federal Environmental Protection Agency (USEPA).

Maximum Contaminant Level (MCL) The highest level of a contaminant that is allowed in drinking water.

Primary MCLs are set as close to the PHGs (or MCLGs) as is technologically, and economically feasible.

Secondary MCLs are set to protect the odor, taste and appearance of drinking water.

Primary Drinking Water Standards (PDWS): MCLs for contaminants that affect health, along with their monitoring and reporting requirements, and surface water treatment requirements.

Action Level (AL): The concentration of a contaminant which, if exceeded, triggers treatment or other requirements which a water system must follow.

MFL: million fibers per liter

PPB: parts per billion or micrograms per liter

PPM: parts per million or milligrams per liter

ND: non detectable at testing limit

TDS: Total Dissolved Solids

Sources of drinking water (both tap and bottled water) include rivers, lakes, streams, ponds, reservoirs, springs and wells. As water travels over the surface of the land or through the ground, it dissolves naturally-occurring minerals and, in some cases, radioactive material, and can pick up substances resulting from the presence of animals or from human activity.

Contaminants that may be present in source water include:

- Microbial contaminants, such as viruses and bacteria that may come from sewage treatment plants, septic systems, agricultural livestock operations and wildlife.
- Inorganic contaminants, such as salts and metals, that can be naturally-occurring or result from urban storm water runoff, industrial or domestic waste water discharges, oil and gas production, mining, or farming.
- Pesticides and herbicides, which may come from a variety of sources such as agriculture, urban storm water runoff, and residential uses.
- Organic chemical contaminants, including synthetic and volatile organic chemicals that are byproducts of industrial processes and petroleum production, and can also come from gas stations, urban storm water runoff and septic systems.
- Radioactive contaminants, which can be naturally-occurring or be the result of oil and gas production and mining activities.

General Information on Drinking Water

All drinking water, including bottled water, may reasonably be expected to contain at least small amounts of some contaminants. The presence of contaminants does not necessarily indicate that the water poses a health risk. More information about contaminants and potential health effects can be obtained by calling the USEPA's Safe Drinking Water Hotline at 1-800-426-4791.

Some people may be more vulnerable to contaminants in drinking water than the general population. Immune-compromised persons such as persons with cancer undergoing chemotherapy, persons who have undergone organ transplants, people with HIV/AIDS or other immune system disorders, some elderly individuals, and infants can be particularly at risk from infections. These people should seek advice about drinking water from their health care providers. The USEPA/Center for Disease Control guidelines on appropriate means to lessen the risk of infection by cryptosporidium and other microbiological contaminants are available from the Safe Drinking Water Hotline at 1-800-426-4791.



Your water utility is responsible for underground pipes from the street up to your water meter, but if your pipes leak after your water meter, it is your responsibility to make repairs.

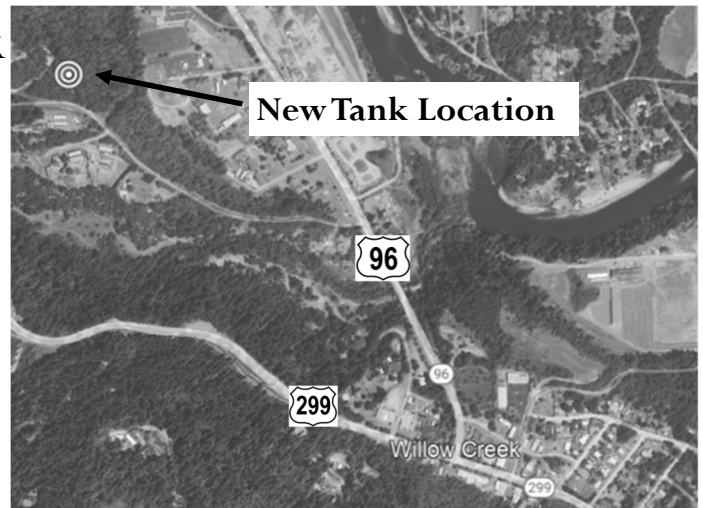
Brannan Mountain Water Tank

More Water Storage coming!

The District has recently been awarded grant for 2.1 million dollars to construct a new water tank on Brannan Mountain!

The tank will be located on a property already owned by the District as the vision for this tank has been in the work for many years.

The tank will be located approximately 0.5 miles up Brannan Mountain on the north side of the road. The tank will be around 450 million gallons which will greatly add to our existing storage capacity which is only 1.08 million gallons. The new storage amount will be 1.53 million, a 40% increase!

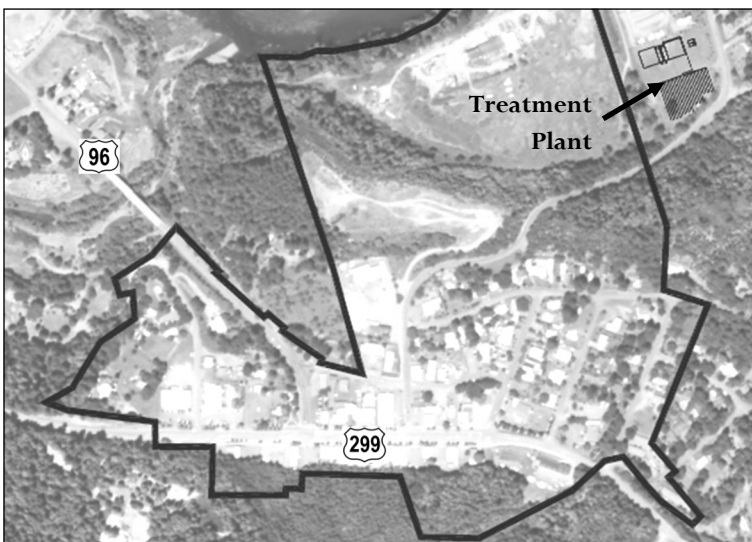


Downtown Wastewater Update

Construction continues!

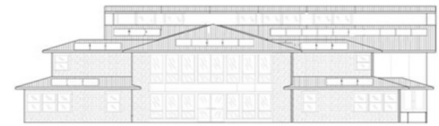
- The wastewater project is in its second year of construction. The project is 100% grant funded by the State Water Resources Control Board (SWRCB) and the USDA.
- The general contractor, Mercer Fraser Co., has completed most of the collection system lines. By the time you have received this mailer, they will be working on highway 299 which is the last main line.
- The Treatment Plant is almost completed. After the plant is up and running and the collection system has been installed, Mercer Fraser will start to begin the connection of each house and business, one by one.
- The wastewater service boundary of the system is shown in the image below. It is only in the downtown area and properties adjacent to the wastewater treatment plant.
- The collection system will be gravity sewer lines with two pump stations.
- The annual budget for the new wastewater system will be paid by collecting monthly sewer rates from the properties that are connected to the system. Those outside of the service boundary and not connected to the system will not receive a bill.

Questions ? If you have any questions regarding this project, please feel free to contact the General Manager, Susan O'Gorman.



Community News

**Please help to build the
Community Youth Center!
Donate today!**



Dream Quest has raised 82% of our goal,
we need your help to reach 100%.

HOW TO DONATE:

PayPal

Mail Check

Dream Quest
Box 609

Willow Creek, CA 95573

Web Site

dqwc.org

Phone

(530) 629-3564

Visit Us

100 Country Club Drive, Willow Creek

Scan QR CODE



Dream Quest
Willow Creek Youth Partnership



Recreation Updates

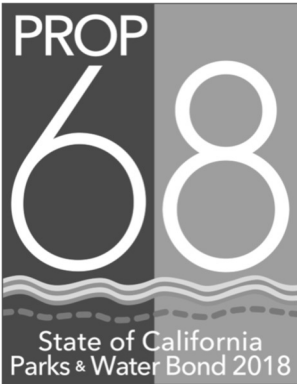
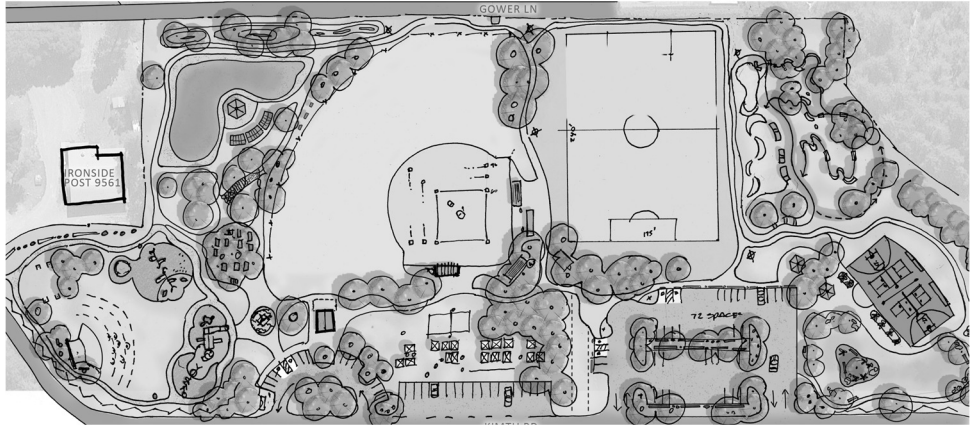
\$1.98 Million Rural Rec & Tourism Grant!

Design continues on our State of California Department of Parks and Recreation \$1.98 million dollar grant for upgrades to Veteran's Park! Melton Design Group (MDG) is almost complete with the design development package and will soon be moving into final construction drawings. The construction will start in the spring of 2025!



The following 9 items will be completed as part of the grant, among other general improvements:

1. NEW Bigfoot Bowl Skate Park
2. Renovate Tennis courts into NEW multi-use, multi -age Sport Courts
3. NEW Accessible walking path
4. NEW snack shack building
5. Renovate the existing Bike Park
6. NEW Water Misting Tree
7. NEW 'Bigfoot Story' playground area
8. Renovate an existing baseball field to WCBC standards
9. Solar lighting throughout the Park



The District is currently in the process of selecting the Skate Park designer/contractor to complete the design of the skate park and then construct the skate park in the spring of 2025.

The image above is the final master plan of the park as approved by the WCCSD board. You can find a larger version with annotation on our website www.willowcreekcsd.com

Creekside Park Upgrades

The District has used funds from the State of California Parks Proposition 68 Per Capita funds. We completed an expansion of the disc golf course last year and this spring we have been working on a new vault toilet, a new playground structure and ADA facilities..

R. Brown Inc. won the bid to complete the work and is currently completing the vault bathroom and ADA facilities. The new playground structure will arrive soon.

Loose something in the park? Sometimes lost items are turned into our office. Please check with us if you have lost something at the parks. 530 629-2136



Our Parks are Fee Based !

What does that mean?

- Our recreation department has a very small budget.
- We do not get any sales tax because we are not a city. We do get a small proportion of property tax for those properties within the WCCSD boundary.
- The remainder of our budget comes from the Kimtu Campground and Kimtu Beach fees and then from renting the parks.
- If you would like to have a barbeque, birthday party, baseball or softball game, or other event at one of our parks, please contact the WCCSD Office at 530-629-2136.

Your spot will be reserved by your fee which goes towards recreation labor, trash bills, mowing, supplies, and repairs. Thank you for contributing to our parks!